



Primary Agricultural Stream
Temporary Foreign Worker Program

Abbotsford, BC
 January 23, 2020



1

Temporary Foreign Worker Program (TFW)

- The Temporary Foreign Worker (TFW) Program assists Canadian employers fill labour requirements when qualified Canadians and permanent residents are not available, ensuring temporary foreign workers are protected while in Canada.
- The Program is employer demand-driven and is an option for employers to address immediate skills and labour needs on a temporary basis.




2

Primary Agricultural Stream

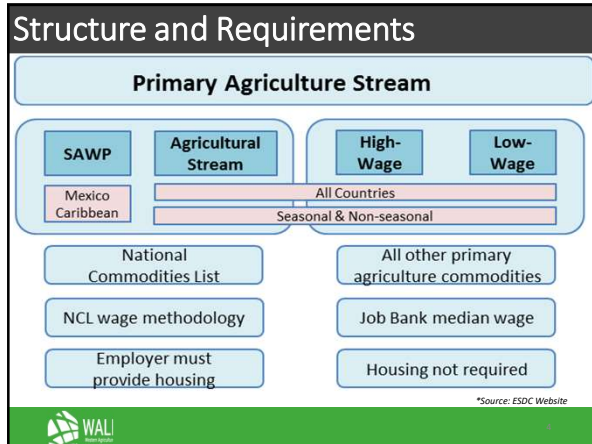
The **Primary Agriculture Stream** is currently divided into four **streams**:

1. The Seasonal **Agricultural** Worker Program (SAWP)
Mexico and Caribbean countries
2. **Agricultural Stream**
3. High-Wage **Stream**
4. Low-Wage **Stream**

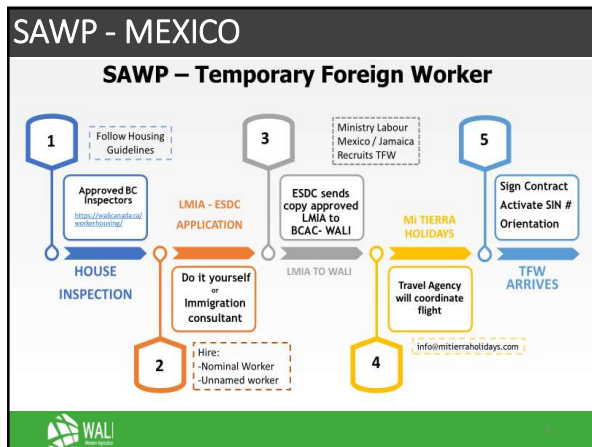
- To access the SAWP or the Agricultural Stream, the agricultural production must be on the [National Commodities List](#) (NCL).



3



4



5

Agricultural Stream

- Allows employers to hire Temporary Foreign Workers (TFWs) for a maximum period of 24 months
- Temporary foreign worker can be from any country
- To qualify for this stream, employers must meet 2 criteria:
 1. production must be in specific commodity sectors, and
 2. the activity must be related to on-farm [primary agriculture](#)


6

High Wage and Low Wage

Production is **not** included on the National Commodities List

The High- or Low-wage Streams of the LMIA are defined by reference to a [provincial or territorial median hourly wage](#) published by ESDC.


For example in BC median hourly wage is CA\$23.98. Therefore, positions in BC that offer a wage at or above the median hourly wage are processed under the High-wage stream, while positions offering a wage lower than this are processed under the Low-wage Stream.



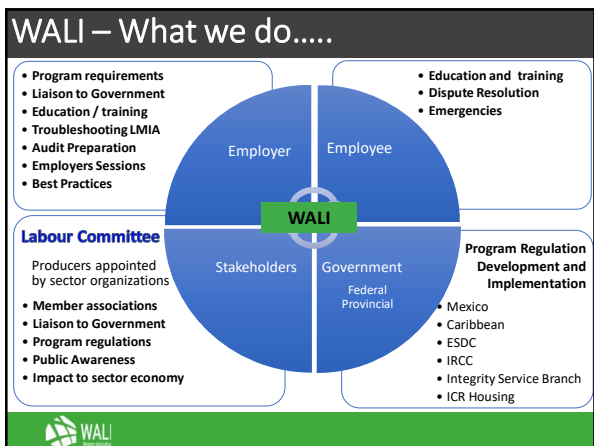
7

Average Processing Times LMIA:

Application type	Delay
Agricultural Stream	23 business days
Seasonal Agricultural Worker Program	10 business days
High-wage Stream	80 business days
Low-wage Stream	108 business days



8



9

New BC Temporary Foreign Worker Protection Act

The legislation establishes the framework for:

Phase 1: A **new recruiter licensing requirement** for foreign worker recruiters.

Phase 2: A **new registration requirement** for those wishing to hire foreign nationals.

Phase 1: New Recruiter Licence

- Licences are for foreign worker recruiters operating in BC; only individuals are licensed, not corporations.
- There is no fee to obtain a license, there is a requirement to post a surety.



10


New Recruiter Licence

- Licences are **NOT** required for:

A person who:

- Recruits for employment with the person's own business
- Provides recruitment services for a foreign national who is a member of the person's family
- Acts on behalf of a college, institution or university
- Acts on behalf of the government of Canada

- Licences will be published online
- Licensees must disclose their partners inside and outside of BC, and will be responsible for ensuring that they also comply with the Act.



11

Phase 2: Registering Employers


Phase 2: Employer Registration

FALL - 2020

- Undertake a consultation process
- Finalize and communicate program delivery details

Phase 3: Full Implementation – TBC

- Establish processes in alignment with Employment Standards Branch;
- New Compliance and Enforcement unit; prioritize enforcement objectives;
- Public outreach and education campaign.



12

CONTACT INFO

Veronica Moreno
PROGRAM MANAGER | *Jefe de Programa*
P: 604 854 4454 | TF: 1 866 522 3447
www.walicanada.ca



WALI
Western Agriculture
Labour Initiative

info@walicanada.ca